



WATERFORD

2012 Plan of Preservation, Conservation and Development

Part 2 - Implementation Element

January 2012

Table Of Contents

Introduction ...	About This Plan Implementation Overview Implementation Tools
-------------------------	--

Preserve ...	Natural Resources Coastal Resources Open Space
---------------------	--

Enhance ...	Community Character Quality of Life Sustainability / Resiliency
--------------------	---

Guide ...	Overall Structure Residential Development Business Development
------------------	--

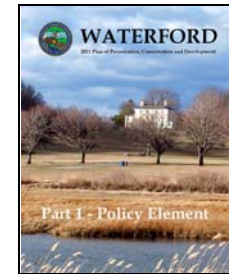
Support ...	Community Facilities Transportation Utility Infrastructure
--------------------	--

About This Plan ...

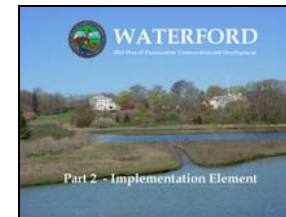
The Plan of Preservation, Conservation and Development for the Town of Waterford consists of:

- a “Policy Element”, and
- an “Implementation Element.”.

The main part – known as the “Policy Element” - is a statement of the overall strategic directions which are considered important for the Town of Waterford to promote and pursue in order to preserve and enhance those things considered integral to the overall character, ambience, and quality of life in the Town. It is “big picture” and strategic in nature so that Waterford residents will use it to discuss and refine the major directions of the community. It is envisioned that the Policy Element will be reviewed every 5-10 years to ensure that the strategic directions for Waterford are appropriate for addressing the issues facing the community.



This part – known as the “Implementation Element” - is a more detailed compilation of tasks and programs which will be considered to accomplish the overall strategies. This element identifies specific tasks to be completed, the entity responsible for completing the task, and the anticipated timeframe for completing the task. It is envisioned that the Implementation Element will be reviewed and updated every year to clear completed tasks and to add new tasks. In addition, this annual review will help to ensure that the work program for the coming year (and beyond) reflects fiscal and operational capabilities and the evolving needs of the Town.



Based on community meetings and input, the two elements of the Plan are based on the following goal:

Guide the future of Waterford so that:

- **important resources will be preserved,**
- **development will enhance neighborhoods and the community,**
- **community needs will be addressed, and**
- **the overall ambience and quality of life will be maintained.**

Implementation Overview

Implementation is the main purpose of the planning process. While identification of desirable strategies is important, that effort will only bear fruit if tasks or actions are implemented to make it happen. It is intended that this Implementation Element be a working document used to implement strategies identified in the Policy Element (a separate document) of the 2011 Plan of Preservation, Conservation and Development.

It is expressly intended that this Plan of Preservation, Conservation and Development will be used on a regular basis. The main reason that the Plan has been prepared with two elements is so that this Implementation Element will be updated on a regular basis by:

- Assessing how implementation is proceeding,
- Adding new tasks or actions that will help accomplish the overall strategic goals outlined in the Policy Element,
- Refining tasks or actions already under way in order to enhance their implementation or improve their effectiveness,
- Deleting tasks or actions completed satisfactorily, and
- Adding or deleting tasks or actions as the Policy Element is amended from time to time.

This process is intended to cultivate a “culture of planning” within Waterford where the overall strategies are periodically reviewed and the supporting tasks and policies are regularly revised to respond to changing conditions. This approach will help the Plan (and Plan strategies) be relevant over a long timeframe.

It is understood that implementation of the Plan will be a gradual and continual process. While some recommendations should (and will) be carried out in a relatively short period of time, others may be long-term in nature. Further, since some recommendations will involve additional study or a commitment of fiscal resources, their implementation will take place over several years or occur in stages.

The Planning and Zoning Commission has the primary responsibility of coordinating implementation of the Plan’s recommendations. Of course, some recommendations will require the cooperation of, and actions by, other local boards and commissions. However, if the Plan is to be successfully realized, it must serve as a guide to all residents, businesses, and individuals interested in the orderly growth of Waterford.

Implementation Tools

Plan Implementation Committee

The Planning and Zoning Commission (PZC) typically has the primary responsibility for coordinating implementation of the Plan's recommendations. However, since the Commission has regulatory responsibilities which may distract it from Plan implementation, it is recommended that the Commission establish a Plan Implementation Committee (PIC) to oversee implementation of the Plan.

The Plan Implementation Committee (PIC) would include representatives of various boards and commissions and be responsible for coordinating and monitoring implementation of the Plan. The Committee should assess the status of specific recommendations, evaluate the priorities, and even suggest new implementation techniques.

Annual Work Programs

The Plan of Preservation, Conservation and Development should be used to organize the annual work programs (including operating budget requests, capital planning and work programs) of local departments, boards, and other agencies. If the activities of all municipal organizations can be coordinated, there can be significant benefits in efficiency, economy, and results.

Subsequent pages in this element contain implementation tables identifying initial tasks and actions that will promote implementation of the Plan. The guides assign primary responsibilities and priorities to implementing the recommended strategies and tasks.

As A Reference For Proposed Actions Or Activities

Using the Plan of Preservation, Conservation and Development as a basis for land use and other decisions within the Town will help accomplish the goals and objectives of the Plan. All land use proposals will be evaluated in terms of the Plan and its various elements.

Annual Operating Budget

The Annual Budget is the guideline for municipal spending over the coming fiscal year. Plan recommendations should be considered during formulation of the Town's Operating Budget so that the overall objectives of the Plan will be accomplished.

Capital Improvement Programming

The Capital Budget (or Capital Improvement Plan) is a tool for planning major capital expenditures of a municipality so that local needs will be identified and prioritized within local fiscal constraints that exist. The Plan proposes that plan recommendations be included in the Town's Capital Improvements Plan and that funding for them be included as part of the Capital Budget.

Implementation Tables

The implementation tables on the following pages will be used by the Plan Implementation Committee, the Planning and Zoning Commission and other boards and commissions to develop and refine more detailed work programs. In addition, it is envisioned that the Town will use the Plan to help develop the operational budget and the capital budget and refine the implementation schedule. The annual work program will then be shared and coordinated with other boards and commissions.

More importantly, it is envisioned that the Plan Implementation Committee will update these implementation tables on a regular basis to ensure that they reflect the most current thinking about desirable actions and programs for the Town of Waterford. It is understood that policies and strategies will evolve over time as implementation or new situations provides insight into desirable policy directions. In other words, the Plan is not a static document and it will continue to be reviewed and refined over time. The process of updating the implementation tables should be swift and purposeful so that efforts can be focused back on implementation.

Legend For Implementation Tables

The following page contains an example of an implementation table and a glossary of terms. These are provided to assist with the implementation and updating of the tasks and actions in the future.

The following table summarizes the codes for some of the organizations expected to participate in implementation:

<u>Code</u>	<u>Description</u>	<u>Code</u>	<u>Description</u>	<u>Code</u>	<u>Description</u>
BOE	Board of Education	FS	First Selectman	Res.	Waterford Residents
BOF	Board of Finance	HMC	Harbor Management Commission	RPC	Recreation & Parks Commission
BOS	Board of Selectmen	HPC	Historic Properties Commission	RTM	Representative Town Meeting
CC	Conservation Commission	LLHD	Ledge Light Health District	SC	Shellfish Commission(s)
DRC	Design Review Committee	MH	Municipal Historian	Town	Town Departments / Staff
EDC	Economic Development Commission	Other	Other Boards, Agencies, or Persons	TA	Traffic Authority
EM	Emergency Management	PD	Police Department	UC	Utility Commission
ETF	Energy Task Force	PIC	Plan Implementation Committee	WPC	Water Pollution Control Authority
FD	Fire Department	PW	Public Works Department		
FEC	Flood/Erosion Control Board	PZC	Planning and Zoning Commission		

Legend

Leader -
The organization with primary responsibility for implementation.
(See codes on facing page and on inside back cover).

Partners -
Other organizations that will assist with implementation.
(See codes on facing page and on inside back cover)

Program -
An ongoing program or strategy which is expected to continue over time and may never be completed. Identified with a letter in the "Priority / Status" column.

Action / Task -
A distinct step or part of a work program which can be measured and identified as completed. Identified with a number in the "Priority / Status" column and a check box for noting that the action is completed.

Waterford Plan of Conservation and Development - Implementation Element
Implementation Tables

B. Continue to Protect Historic / Archeological Resources Community Character

Priority / Status	Description	Date Added	Target Date	Complete	Leader	Partners
C	1. Continue and enhance efforts to identify and preserve historic resources.	2/2011	Ongoing	n/a	HPC	MH
3	<input type="checkbox"/>	2. As appropriate, undertake studies to identify and document historic resources in Waterford	2/2011	TBD	HPC	MH
3	<input type="checkbox"/>	3. As appropriate, nominate eligible areas or properties for inclusion in the State Register of Historic Places or the National Register of Historic Places	2/2011	TBD	HPC	MH
C	4. Continue and enhance efforts to identify and preserve archeological resources.	2/2011	Ongoing	n/a	HPC	MH
3	<input type="checkbox"/>	5. Undertake archeological studies to identify and document archeological resources in Waterford	2/2011	Ongoing	HPC	MH
3	<input type="checkbox"/>	6. Prepare a map showing areas of archeological sensitivity.	2/2011	7/2013	HPC	MH
3	<input type="checkbox"/>	7. Adopt a regulation requiring that an archeological assessment be conducted if a development is located in an identified sensitive area	2/2011	7/2013	HPC	MH
C	8. Encourage preservation of existing historic buildings	2/2011	Ongoing	n/a	HPC	MH
C	9. Encourage activities by owners which help preserve historic buildings and character	2/2011	Ongoing	n/a	HPC	MH
C	10. Continue to encourage the preservation activities of the Waterford Historical Society and other organizations	2/2011	Ongoing	n/a	HPC	MH
C	11. Use the demolition delay ordinance to preserve cultural resources or, if not possible, to allow time to fully document the resource.	2/2011	Ongoing	n/a	MH	
3	<input type="checkbox"/>	12. Establish a series of community markers to identify historic / cultural / educational sites along with a tour map of how to get there.	2/2011	TBD	HPC	MH EDC

Letter = Ongoing Program / Strategy
A = Most Important
B = Very Important
C = Important
D = Needed

Number = Distinct Task / Action
1 = Most Important
2 = Very Important
3 = Important
4 = Needed

Page 10

Percent Complete -
Information to track progress of implementation of actions / tasks. Marked as not applicable (n/a) for programs.

Target Date -
The projected target date for implementation to be complete. Marked as on-going for programs.

Date Added -
The date the item was added to the implementation tables.

Policy Priorities Legend -
A = Most Important
B = Very Important
C = Important
D = Needed

Task Priorities Legend -
1 = Most Important - Should be implemented immediately
2 = Very Important - Should be implemented in near future
3 = Important - Should be addressed in next few years
4 = Needed - Should be implemented as opportunities arise

Maintenance of Implementation Tables

It is intended that the implementation tables on the following pages will be reviewed and updated annually. It is not intended that these implementation tables should be expected to remain valid or relevant for an extended period since circumstances affecting the Town of Waterford will certainly change over time. The process of annual review and updating of the implementation tables might include the following protocol *for each element and strategy*:

Programs / Objectives (Ongoing activities where progress or completion may not be completed)

1. Which programs or objectives are being implemented?
 - a. Are the results helping to achieve the strategic direction identified in the Policy Element of the Plan?
 - b. Should any refinements be made to the program or objective?
2. Are there any new programs or objectives (or changes to listed programs or objectives) which should be undertaken to help achieve the strategic direction identified in the Policy Element of the Plan?

Task / Actions (progress or completion can be identified and measured)

3. Which tasks or actions have been initiated or completed since the last review?
 - a. Are the results helping to achieve the strategic direction identified in the Policy Element of the Plan?
 - b. Should any refinements be made to the task or action?
 - c. Can the task or action be marked as completed?
4. Are there any new tasks or actions (or changes to listed tasks or actions) which should be undertaken to help achieve the strategic direction identified in the Policy Element of the Plan?

Priority / Responsibility

5. Are the priorities for the program/objectives appropriate?
6. Is the target date realistic and reasonable given available resources and priorities?
7. Are the appropriate entities identified?

Overall Strategy

8. Is the overall strategy still relevant and appropriate?
9. Are any new strategies needed to focus attention in new areas?

Implementation Tables

Overall Implementation Implementation

See pages 2-6 in the "Implementation Element" of the Plan of Conservation and Development for information on overall implementation.

A. Implement The Plan Overall Implementation

Priority / Status	Description	Date Added	Target Date	% Complete	Leader	Partners
1 <input type="checkbox"/>	1 . Adopt the Plan.	2/2011	10/2011		PZC	BOS RTM
1 <input type="checkbox"/>	2 . Establish a Plan Implementation Committee.	2/2011	10/2011		PZC	BOS RTM
A	3 . Use the Plan as an active document (to guide activities of the Town) .	2/2011	Ongoing	n/a	PIC	RTM BOS BOF FS
A	4 . Use the Plan as a basis for land use decisions.	2/2011	Ongoing	n/a	PZC	CC
2 <input type="checkbox"/>	5 . Update Subdivision Regulations to implement Plan strategies.	2/2011	10/2012		PZC	
2 <input type="checkbox"/>	6 . Update Zoning Regulations to implement Plan strategies.	2/2011	1/2013		PZC	

Letter = Ongoing Program / Strategy

- A = Most Important
- B = Important
- C = Needed

Number = Distinct Task / Action

- 1 = Most Important
- 2 = Important
- 3 = Needed

Implementation Tables

B. Maintain The Implementation Element **Overall Implementation**

Priority / Status	Description	Date Added	Target Date	% Complete	Leader	Partners
1 <input type="checkbox"/>	1 . Hold an annual meeting for Department Heads to review and revise implementation status and Plan priorities by September 1, 2012.	2/2011	9/2012		PIC	
1 <input type="checkbox"/>	2 . Hold an annual meeting for elected officials to review the status of implementation and set priorities by October 1, 2012.	2/2011	10/2012		PIC	
1 <input type="checkbox"/>	3 . Update the Implementation Element by November 1, 2012.	2/2011	11/2012		PIC	
1 <input type="checkbox"/>	4 . Use the Plan to guide preparation of the 2013-14 Annual Operating Budget and thereafter.	2/2011	1/2012		FS	BOS BOF RTM
1 <input type="checkbox"/>	5 . Use the Plan to guide preparation of the 2013-2018 Capital Improvement Plan and thereafter.	2/2011	1/2012		FS	BOS BOF RTM

Letter = Ongoing Program / Strategy

- A = Most Important
- B = Important
- C = Needed

Number = Distinct Task / Action

- 1 = Most Important
- 2 = Important
- 3 = Needed

Implementation Tables

C. Create And Cultivate Awareness Of The Plan

Overall Implementation

Priority / Status	Description	Date Added	Target Date	% Complete	Leader	Partners
1 <input type="checkbox"/>	1 . Notify Town boards and agencies of adoption of the Plan.	2/2011	10/2011		PZC	BOS RTM
2 <input type="checkbox"/>	2 . Place current Plan elements on the Town's website.	2/2011	10/2011		PZC	BOS RTM
3 <input type="checkbox"/>	3 . Distribute an Executive Summary of the Plan to all boxholders in Waterford.	2/2011	12/2011		PZC	BOS RTM
B	4 . Keep the Implementation Element on the web site current .	2/2011	Ongoing	n/a	PIC	

Letter = Ongoing Program / Strategy

- A = Most Important
- B = Important
- C = Needed

Number = Distinct Task / Action

- 1 = Most Important
- 2 = Important
- 3 = Needed

Implementation Tables

D. Coordinate Implementation With Others

Overall Implementation

Priority / Status	Description	Date Added	Target Date	% Complete	Leader	Partners
A	1 . Actively participate in any "cross-acceptance" process established by the Office of Policy and Management with regard to the State Plan	10/2011	Ongoing	n/a	PZC	FS
C	2 . Continue to work cooperatively with other municipalities in areas of common interest, as appropriate.	2/2011	Ongoing	n/a	RTM	BOS FS
C	3 . Coordinate with programs and efforts of regional agencies, as appropriate.	2/2011	Ongoing	n/a	PZC	BOS RTM FS
C	4 . Coordinate with programs and efforts of state agencies, as appropriate.	2/2011	Ongoing	n/a	PZC	BOS RTM FS

Letter = Ongoing Program / Strategy

A = Most Important
 B = Important
 C = Needed

Number = Distinct Task / Action

1 = Most Important
 2 = Important
 3 = Needed

Implementation Tables

Natural Resources Preserve

See pages 16-19 in the "Policy Element" of the Plan of Conservation and Development for information on "Natural Resource" strategies.

A. Protect Water Quality Natural Resources

Priority / Status	Description	Date Added	Target Date	% Complete	Leader	Partners
A	1 . Continue to protect water quality and water resources on a watershed basis.	2/2011	Ongoing	n/a	CC	PZC UC
1 <input type="checkbox"/>	2 . Adopt the principles in the Connecticut Stormwater Quality Manual	10/2011	3/2012		PZC	
1 <input type="checkbox"/>	3 . Adopt regulations for promoting or requiring "low impact development" techniques.	2/2011	3/2012		PZC	
B	4 . Continue to hold "household hazardous waste collection" events in Waterford.	2/2011	Ongoing	n/a	PW	CC
B	5 . Continue to undertake studies of sensitive watersheds in Waterford.	2/2011	Ongoing	n/a	CC	PZC FEC
B	6 . Continue to participate in programs related to water quality protection and implement the recommendations of those studies.	2/2011	Ongoing	n/a	CC	PZC
B	7 . Continue to perform water quality testing on a regular basis.	2/2011	Ongoing	n/a	CC	PZC
B	8 . Continue efforts to identify important resource areas and continue efforts to conserve and protect these areas.	2/2011	Ongoing	n/a	CC	PZC
B	9 . Provide education programs to inform residents about how some activities can impact surface water and ground water.	2/2011	Ongoing	n/a	CC	
C	10 . Encourage minimal use of fertilizers and other chemicals that can affect water quality and water resources.	2/2011	Ongoing	n/a	CC	
C	11 . Continue to address and manage erosion problems in accordance with the erosion and sediment control manual.	2/2011	Ongoing	n/a	PZC	CC FEC

Letter = Ongoing Program / Strategy

- A = Most Important
- B = Important
- C = Needed

Number = Distinct Task / Action

- 1 = Most Important
- 2 = Important
- 3 = Needed

Implementation Tables

B. Protect Plant And Animals And Their Habitats

Natural Resources

Priority / Status	Description	Date Added	Target Date	% Complete	Leader	Partners
C	1 . Continue to protect habitats of rare and endangered species and other sites listed on the Natural Diversity Database.	2/2011	Ongoing	n/a	CC	PZC
3 <input type="checkbox"/>	2 . Adopt regulations requiring NDDDB data be submitted with every land use application.	2/2011	12/2011		PZC	CC
C	3 . Seek to create and protect unobstructed natural corridors to connect important habitats and sustain species diversity.	2/2011	Ongoing	n/a	PZC	CC
C	4 . Strive to maintain the health of fisheries and shellfish beds.	2/2011	Ongoing	n/a	SC	HMC CC PZC
C	5 . Discourage or prevent the introduction of invasive or non-native species.	2/2011	Ongoing	n/a	CC	PZC
C	6 . Educate and inform residents about the overall ecology and wildlife in Waterford.	2/2011	Ongoing	n/a	CC	

Letter = Ongoing Program / Strategy

A = Most Important
 B = Important
 C = Needed

Number = Distinct Task / Action

1 = Most Important
 2 = Important
 3 = Needed

Implementation Tables

C. Protect Important Natural Resources

Natural Resources

Priority / Status	Description	Date Added	Target Date	% Complete	Leader	Partners
A	1 . Protect significant natural resources (such as water quality, watercourses, wetlands, etc.) as identified in the Policy Element of the Plan.	2/2011	Ongoing	n/a	PZC	CC
A	2 . Protect important natural resources (such as habitat areas, aquifers, etc.) as identified in the Policy Element of the Plan.	2/2011	Ongoing	n/a	PZC	CC

Letter = Ongoing Program / Strategy

A = Most Important
 B = Important
 C = Needed

Number = Distinct Task / Action

1 = Most Important
 2 = Important
 3 = Needed

Implementation Tables

D. Expand The Role Of Conservation Planning

Natural Resources

Priority / Status	Description	Date Added	Target Date	% Complete	Leader	Partners			
B	1 . Continue to develop and implement strategies for natural resource conservation.	2/2011	Ongoing	n/a	PIC	CC	RTM	BOS	FS
2 <input type="checkbox"/>	2 . Enhance the capacity of Town boards/agencies to think strategically about conservation issues.	2/2011	7/2012	n/a	PIC	CC	RTM	BOS	FS

Letter = Ongoing Program / Strategy

- A = Most Important
- B = Important
- C = Needed

Number = Distinct Task / Action

- 1 = Most Important
- 2 = Important
- 3 = Needed

Implementation Tables

Coastal Resources Preserve

See pages 20-23 in the "Policy Element" of the Plan of Conservation and Development for information on Coastal Resource" strategies.

A. Protect Coastal Resources Coastal Resources

Priority / Status	Description	Date Added	Target Date	% Complete	Leader	Partners
A	1 . Protect and preserve significant coastal resources especially those listed in the Policy Element of the Plan.	2/2011	Ongoing	n/a	PZC	CC SC HMC
A	2 . Protect and conserve important coastal resources especially those listed in the the Policy Element of the Plan.	2/2011	Ongoing	n/a	PZC	CC SC HMC
B	3 . Continue to restore affected coastal resource areas in Waterford	2/2011	Ongoing	n/a	CC	FEC SC
B	4 . Strive to minimize damage to fragile dune areas and other coastal resources from pedestrians and pets.	2/2011	Ongoing	n/a	CC	PRC PZC

Letter = Ongoing Program / Strategy

- A = Most Important
- B = Important
- C = Needed

Number = Distinct Task / Action

- 1 = Most Important
- 2 = Important
- 3 = Needed

Implementation Tables

B. Manage and Guide Coastal Activities

Coastal Resources

Priority / Status	Description	Date Added	Target Date	% Complete	Leader	Partners
B	1 . Continue efforts to improve public access to the waterfront.	2/2011	Ongoing	n/a	PZC	HMC
B	2 . Continue to encourage water-dependent activities at appropriate sites in a manner that does not degrade the environment.	2/2011	Ongoing	n/a	PZC	HMC

Letter = Ongoing Program / Strategy

A = Most Important
 B = Important
 C = Needed

Number = Distinct Task / Action

1 = Most Important
 2 = Important
 3 = Needed

Implementation Tables

C. Coordinate Oversight Of Activities In Coastal Areas

Coastal Resources

Priority / Status	Description	Date Added	Target Date	% Complete	Leader	Partners
B	1 . Coordinate coastal area policies and activities among involved agencies to the extent possible.	2/2011	Ongoing	n/a	CC	PZC SC HMC

Letter = Ongoing Program / Strategy

- A = Most Important
- B = Important
- C = Needed

Number = Distinct Task / Action

- 1 = Most Important
- 2 = Important
- 3 = Needed

Implementation Tables

D. Be Aware Of Flooding Potential In Coastal Areas

Coastal Resources

Priority / Status	Description	Date Added	Target Date	% Complete	Leader	Partners
B	1 . Continue to manage activities in coastal areas in recognition of the potential for coastal flooding.	2/2011	Ongoing	n/a	CC	PZC SC HMC FEC

Letter = Ongoing Program / Strategy

- A = Most Important
- B = Important
- C = Needed

Number = Distinct Task / Action

- 1 = Most Important
- 2 = Important
- 3 = Needed

Implementation Tables

Preserve

Open Space

See pages 24-29 in the "Policy Element" of the Plan of Conservation and Development for information on "Open Space" strategies.

Open Space

A. Increase The Amount Of Preserved Open Space In Waterford

Priority / Status	Description	Date Added	Target Date	% Complete	Leader	Partners
A	1 . Continue to acquire and manage open space lands for the benefit of the Town and its population.	2/2011	Ongoing	n/a	CC	RPC PZC
2 <input type="checkbox"/>	2 . Create and fund a Land Acquisition Fund (CGS 7-131r).	2/2011	7/2012		BOS	BOF RTM CC

Letter = Ongoing Program / Strategy

- A = Most Important
- B = Important
- C = Needed

Number = Distinct Task / Action

- 1 = Most Important
- 2 = Important
- 3 = Needed

Implementation Tables

B. Establish A Coordinated Open Space / Greenbelt / Trail System

Open Space

Priority / Status	Description	Date Added	Target Date	% Complete	Leader	Partners
B	1 . Seek to establish “a comprehensive greenbelt system which ... follows the town’s major streams and brooks.”	2/2011	Ongoing	n/a	CC	RPC PZC
B	2 . Establish a trail system for pedestrians and bicycles	2/2011	Ongoing	n/a	CC	RPC BOS BOF RTM
2 <input type="checkbox"/>	3 . Refine and extend the preliminary vision for an overall open space and greenway system.	2/2011	12/2012		CC	RPC PZC RTM
B	4 . Acquire more land for parks and open space.	2/2011	Ongoing	n/a	CC	RPC BOS BOF RTM
C	5 . Devote special attention to increasing open space connectivity.	2/2011	Ongoing	n/a	CC	RPC
C	6 . Review and revise existing trail plans to meet the needs of the community.	2/2011	Ongoing	n/a	CC	RPC

Letter = Ongoing Program / Strategy

- A = Most Important
- B = Important
- C = Needed

Number = Distinct Task / Action

- 1 = Most Important
- 2 = Important
- 3 = Needed

Implementation Tables

C. Designate An Agency To Coordinate Open Space / Greenway Efforts

Open Space

Priority / Status	Description	Date Added	Target Date	% Complete	Leader	Partners
2 <input type="checkbox"/>	1 . Designate an agency to refine the open space and greenway plan	2/2011	12/2011		PIC	RTM BOS CC RPC
3 <input type="checkbox"/>	2 . Designate an agency to maintain the open space and greenway plan	2/2011	12/2012		PIC	RTM BOS CC RPC

Letter = Ongoing Program / Strategy

A = Most Important
 B = Important
 C = Needed

Number = Distinct Task / Action

1 = Most Important
 2 = Important
 3 = Needed

Implementation Tables

D. Provide Adequate Tools and Resources To Provide Open Space and Greenways

Open Space

Priority / Status	Description	Date Added	Target Date	% Complete	Leader	Partners
B	1 . Use available regulatory tools (such as cluster development regulations) to help establish a comprehensive open space and trail system.		Ongoing		PZC	
B	2 . Use available acquisition tools to acquire land and/or easements to help establish a comprehensive open space and trail system	2/2011	Ongoing	n/a	CC	BOS BOF RTM
B	3 . Use available funding programs to support the establishment of a comprehensive open space and trail system	2/2011	Ongoing	n/a	CC	BOS BOF RTM
2 <input type="checkbox"/>	4 . Consider changing regulations to allow the dedication of open space elsewhere in Waterford to meet the open space requirements.	2/2011	7/2012		PZC	
3 <input type="checkbox"/>	5 . Consider acquiring development restrictions or conservation easements on portions of parcels which may be integral to the establishment of an the overall greenbelt/trail system.	2/2011	7/2012		PZC	CC
3 <input type="checkbox"/>	6 . Require that the open space set aside be applied in the R-120 zone.	2/2011	7/2012		PZC	

Letter = Ongoing Program / Strategy

A = Most Important
 B = Important
 C = Needed

Number = Distinct Task / Action

1 = Most Important
 2 = Important
 3 = Needed

Implementation Tables

Enhance

Community Character

See pages 32-37 in the "Policy Element" of the Plan of Conservation and Development for information on "Community Character" strategies.

A. Establish An Advisory Design Review Process

Community Character

Priority / Status	Description	Date Added	Target Date	% Complete	Leader	Partners
A	1 . Establish an advisory design review process.	2/2011	Ongoing	n/a	PZC	
1 <input type="checkbox"/>	2 . Establish an advisory design review committee .	2/2011	12/2011		PZC	
1 <input type="checkbox"/>	3 . Modify regulations to include design review in the application process.	2/2011	12/2011		PZC	
2 <input type="checkbox"/>	4 . Develop design principles in order to provide guidance to applicants.	2/2011	12/2012		DRC	

Letter = Ongoing Program / Strategy

A = Most Important
 B = Important
 C = Needed

Number = Distinct Task / Action

1 = Most Important
 2 = Important
 3 = Needed

Implementation Tables

B. Continue to Protect Historic / Archeological Resources

Community Character

Priority / Status	Description	Date Added	Target Date	% Complete	Leader	Partners
C	1 . Continue and enhance efforts to identify and preserve historic resources.	2/2011	Ongoing	n/a	HPC	MH
3 <input type="checkbox"/>	2 . As appropriate, undertake studies to identify and document historic resources in Waterford	2/2011	TBD		HPC	MH
3 <input type="checkbox"/>	3 . As appropriate, nominate eligible areas or properties for inclusion in the State Register of Historic Places or the National Register of Historic Places	2/2011	TBD		HPC	MH
C	4 . Continue and enhance efforts to identify and preserve archeological resources.	2/2011	Ongoing	n/a	HPC	MH
3 <input type="checkbox"/>	5 . Undertake studies to identify and document archeological resources in Waterford	2/2011	Ongoing	n/a	HPC	MH
3 <input type="checkbox"/>	6 . Prepare a map showing areas of archeological sensitivity.	2/2011	7/2013		PZC	
3 <input type="checkbox"/>	7 . Adopt a regulation requiring that an archeological assessment be conducted if a development is located in an identified sensitive area	2/2011	7/2013		PZC	
C	8 . Encourage preservation of existing historic buildings	2/2011	Ongoing	n/a	HPC	MH
C	9 . Encourage activities by owners which help preserve historic buildings and character.	2/2011	Ongoing	n/a	HPC	MH
C	10 . Continue to encourage the preservation activities of the Waterford Historical Society and other organizations	2/2011	Ongoing	n/a	HPC	MH
C	11 . Use the demolition delay ordinance to preserve cultural resources or, if not possible, to allow time to fully document the resource.	2/2011	Ongoing	n/a	MH	
3 <input type="checkbox"/>	12 . Establish a series of community markers to identify historic / cultural / educational sites along with a tour map of how to get there.	2/2011	TBD		HPC	MH EDC

Letter = Ongoing Program / Strategy

A = Most Important
 B = Important
 C = Needed

Number = Distinct Task / Action

1 = Most Important
 2 = Important
 3 = Needed

Implementation Tables

C. Preserve Scenic Resources

Community Character

Priority / Status	Description	Date Added	Target Date	% Complete	Leader	Partners
B	1 Continue efforts to identify and preserve key scenic vistas and scenic areas while allowing for reasonable use of the specific property and the surrounding area	2/2011	Ongoing	n/a	CC	PZC
2 <input type="checkbox"/>	2 . Prepare a map identifying or updating key scenic vistas and scenic areas in Waterford.	2/2011	12/2012		CC	
2 <input type="checkbox"/>	3 . Adopt a regulation allowing for the consideration of scenic resources as part of any application submitted to the Planning and Zoning Commission.	2/2011	12/2011		PZC	
3 <input type="checkbox"/>	4 . Consider roads for designation as scenic roads (such as Braman, Dimmock, Spithead, etc.)	2/2011	12/2012		PZC	CC
C	5 Continue efforts to preserve stone walls, remaining historic barns, and similar cultural features.	2/2011	Ongoing		CC	HPC MH
3 <input type="checkbox"/>	6 . Prepare and maintain a map identifying stone walls, remaining historic barns, and similar cultural features.	2/2011	12/2012		CC	HPC MH

Letter = Ongoing Program / Strategy

- A = Most Important
- B = Important
- C = Needed

Number = Distinct Task / Action

- 1 = Most Important
- 2 = Important
- 3 = Needed

Implementation Tables

D. Encourage Preservation of Undeveloped Land

Community Character

Priority / Status	Description	Date Added	Target Date	% Complete	Leader	Partners
3 <input type="checkbox"/>	1 . Consider adopting an "open space" assessment program as provided in CGS 12-107 and as described in the Policy Element.	2/2011	7/2012		CC	PZC RTM BOS

Letter = Ongoing Program / Strategy

- A = Most Important
- B = Important
- C = Needed

Number = Distinct Task / Action

- 1 = Most Important
- 2 = Important
- 3 = Needed

Implementation Tables

Quality of Life Enhance

See pages 38-39 in the "Policy Element" of the Plan of Conservation and Development for information on "Quality of Life" strategies.

A. Promote Special Events / Activities Quality of Life

Priority / Status	Description	Date Added	Target Date	% Complete	Leader	Partners			
B	1 . Continue to encourage events and activities that contribute to local quality of life.	2/2011	Ongoing	n/a	RPC	FS	BOS	BOF	RTM

Letter = Ongoing Program / Strategy

- A = Most Important
- B = Important
- C = Needed

Number = Distinct Task / Action

- 1 = Most Important
- 2 = Important
- 3 = Needed

Implementation Tables

B. Implement Other Programs To Enhance Quality of Life

Quality of Life

Priority / Status	Description	Date Added	Target Date	% Complete	Leader	Partners
C	1 . Continue to encourage events and activities that contribute to community spirit and pride	2/2011	Ongoing	n/a	RPC	FS BOS BOF RTM
B	2 . Maintain municipal buildings and grounds in a way that demonstrates the pride we have in our community.	2/2011	Ongoing	n/a	BOS	FS BOS BOF RTM
B	3 . Promote volunteerism by residents which helps support community programs.	2/2011	Ongoing	n/a	Town	
C	4 . Undertake programs to recognize local volunteers	2/2011	Ongoing	n/a	RTM	FS BOS BOF
C	5 . Promote philanthropy by residents which will help to enhance the community, its character, and the quality of life.	2/2011	Ongoing	n/a	RTM	BOS

Letter = Ongoing Program / Strategy

A = Most Important
 B = Important
 C = Needed

Number = Distinct Task / Action

1 = Most Important
 2 = Important
 3 = Needed

Implementation Tables

Enhance

Sustainability / Resiliency

See pages 40-45 in the "Policy Element" of the Plan of Conservation and Development for information on "Sustainability / Resiliency" strategies.

A. Reduce Energy Use

Sustainability / Resiliency

Priority / Status	Description	Date Added	Target Date	% Complete	Leader	Partners
C	1 . Take a leadership role in educating residents and businesses about ways to conserve energy.	2/2011	Ongoing	n/a	ETF	
3 <input type="checkbox"/>	2 . Investigate possible impediments to the use of alternative technologies (solar, wind, fuel cell, geo-thermal, etc.) in the community.	2/2011	7/2013		ETF	PZC
3 <input type="checkbox"/>	3 . Consider modifying local regulations to enable or encourage the use of alternative technologies (solar, wind, fuel cell, geo-thermal, etc.).	2/2011	7/2013		ETF	PZC
2 <input type="checkbox"/>	4 . Establish a Clean Energy Task Force	2/2011	7/2012		ETF	PZC
3 <input type="checkbox"/>	4 . Implement recommendations from the Clean Energy Task Force	2/2011	7/2014		ETF	PZC
C	5 . Encourage development that incorporates measures from the U.S. Green Building Council's Leadership in Energy and Environmental Design (LEED) or other similar sustainable design programs.	2/2011	Ongoing	n/a	PZC	
C	6 . Encourage "life-cycle costing" where up-front investments are compared to long-term savings.	2/2011	Ongoing	n/a	ETF	
C	7 . Encourage the use of solar collectors.	2/2011	Ongoing	n/a	ETF	
C	8 . Investigate ways to reduce the amount of automobile travel for daily needs.	2/2011	Ongoing	n/a	ETF	
C	9 . Promote walking and bicycling through community, site and building design.	2/2011	Ongoing	n/a	ETF	PZC

Letter = Ongoing Program / Strategy

A = Most Important
 B = Important
 C = Needed

Number = Distinct Task / Action

1 = Most Important
 2 = Important
 3 = Needed

Implementation Tables

B. Reduce Water Use

Sustainability / Resiliency

Priority / Status	Description	Date Added	Target Date	% Complete	Leader	Partners
C	1 . Continue to recommend ways for residents to implement water conservation strategies.	2/2011	Ongoing	n/a	CC	UC

Letter = Ongoing Program / Strategy

- A = Most Important
- B = Important
- C = Needed

Number = Distinct Task / Action

- 1 = Most Important
- 2 = Important
- 3 = Needed

Implementation Tables

C. Encourage Farms and Farming

Sustainability / Resiliency

Priority /
Status

Priority / Status	Description	Date Added	Target Date	% Complete	Leader	Partners
C	1 . Strive to have more food grown locally.	2/2011	Ongoing	n/a	CC	FS BOS
C	2 . Seek ways to support local farmers and farming.	2/2011	Ongoing	n/a	CC	FS BOS
B	3 . Consider amending farm regulations to eliminate conflicting language and encourage development of agricultural uses.	10/2011	Ongoing	n/a	PZC	

Letter = Ongoing Program / Strategy

A = Most Important
B = Important
C = Needed

Number = Distinct Task / Action

1 = Most Important
2 = Important
3 = Needed

Implementation Tables

D. Continue Hazard Mitigation Planning

Sustainability / Resiliency

Priority /

Priority / Status	Description	Date Added	Target Date	% Complete	Leader	Partners
B	1 . Continue to participate in hazard mitigation efforts in the future.	2/2011	Ongoing	n/a	PZC	PW FD PD
C	2 . Seek to become part of the FEMA "Community Rating System" in order to reduce flood plain insurance premiums in the community.	2/2011	Ongoing	n/a	PZC	PW FD PD

Letter = Ongoing Program / Strategy

A = Most Important
 B = Important
 C = Needed

Number = Distinct Task / Action

1 = Most Important
 2 = Important
 3 = Needed

Implementation Tables

E. Prepare For Possible Sea Level Rise / Climate Change

Sustainability / Resiliency

Priority / Status	Description	Date Added	Target Date	% Complete	Leader	Partners
C	1 . Monitor sea level trends	2/2011	Ongoing	n/a	CC	
C	2 . Consider the potential need for a gradual phasing in of new policies related to sea level rise.	2/2011	Ongoing	n/a	PZC	EM

Letter = Ongoing Program / Strategy

- A = Most Important
- B = Important
- C = Needed

Number = Distinct Task / Action

- 1 = Most Important
- 2 = Important
- 3 = Needed

Implementation Tables

Guide

Overall Structure

See pages 48-53 in the "Policy Element" of the Plan of Conservation and Development for information on "Overall Structure" strategies.

A. Reinforce Overall Community Structure

Overall Structure

Priority / Status	Description	Date Added	Target Date	% Complete	Leader	Partners
B	1 . Strive to ensure that future development reinforces the overall structure of the community,	2/2011	Ongoing	n/a	PZC	
B	2 . Strive to ensure that future development provides features that enhance community character	2/2011	Ongoing	n/a	PZC	DRC
B	3 . Support the existing villages and hamlets in Waterford	2/2011	Ongoing	n/a	RTM	BOS

Letter = Ongoing Program / Strategy

- A = Most Important
- B = Important
- C = Needed

Number = Distinct Task / Action

- 1 = Most Important
- 2 = Important
- 3 = Needed

Implementation Tables

B. Seek To Create An Overall Town Center / Focal Point For The Community

Overall Structure

Priority / Status	Description	Date Added	Target Date	% Complete	Leader	Partners
B	1 . Seek opportunities to create an overall town center / focal point with a variety of uses that reinforce and complement each other.	2/2011	Ongoing	n/a	PZC	

Letter = Ongoing Program / Strategy

- A = Most Important
- B = Important
- C = Needed

Number = Distinct Task / Action

- 1 = Most Important
- 2 = Important
- 3 = Needed

Implementation Tables

C. Increase Opportunities For Mixed Use And Village-Style Development

Overall Structure

Priority / Status	Description	Date Added	Target Date	% Complete	Leader	Partners
B	1 . Consider opportunities to implement “smarter growth”	2/2011	Ongoing	n/a	PZC	
B	2 . Consider creating new mixed-use “village-type areas” in locations supported by transit and utility infrastructure	2/2011	Ongoing	n/a	PZC	
B	3 . Consider creating pedestrian-friendly environments with a strong sense of place.	2/2011	Ongoing	n/a	PZC	

Letter = Ongoing Program / Strategy

- A = Most Important
- B = Important
- C = Needed

Number = Distinct Task / Action

- 1 = Most Important
- 2 = Important
- 3 = Needed

Implementation Tables

D. Consider Allowing Small-Scale Neighborhood Businesses Where Appropriate

Overall Structure

Priority / Status	Description	Date Added	Target Date	% Complete	Leader	Partners
C	1 . Consider allowing small scale business uses in residential areas where appropriate.	2/2011	Ongoing	n/a	PZC	

Letter = Ongoing Program / Strategy

- A = Most Important
- B = Important
- C = Needed

Number = Distinct Task / Action

- 1 = Most Important
- 2 = Important
- 3 = Needed

Implementation Tables

Guide

Residential Development

See pages 54-57 in the "Policy Element" of the Plan of Conservation and Development for information on "Residential Development" strategies.

A. Protect Existing Residential Neighborhoods

Residential Development

Priority / Status	Description	Date Added	Target Date	% Complete	Leader	Partners
B	1 . Continue to encourage the preservation and enhancement of residential neighborhoods	2/2011	Ongoing	n/a	PZC	
C	2 . Enhance existing residential neighborhoods through supporting landscaping, street tree planting and similar programs.	2/2011	Ongoing	n/a	RTM	BOS BOF
C	3 . Investigate how to get involved in the Community Development Block Grant program to help stabilize existing neighborhoods.	2/2011	Ongoing	n/a	PZC	FS BOS

Letter = Ongoing Program / Strategy

- A = Most Important
- B = Important
- C = Needed

Number = Distinct Task / Action

- 1 = Most Important
- 2 = Important
- 3 = Needed

Implementation Tables

B. Provide For A Diverse Housing Portfolio In Waterford

Residential Development

Priority / Status	Description	Date Added	Target Date	% Complete	Leader	Partners
B	1 . Encourage the availability of housing for a variety of age and income groups.	2/2011	Ongoing	n/a	PZC	
B	2 . Consider ways to address the need for housing options for an aging population.	2/2011	Ongoing	n/a	PZC	
3 <input type="checkbox"/>	3 . Continue allowing congregate living facility, assisted living facility, and/or life care facility in appropriate locations.	2/2011	12/2013		PZC	
3 <input type="checkbox"/>	4 . Consider allowing independent living housing in appropriate locations as a special permit use.	2/2011	12/2013		PZC	
3 <input type="checkbox"/>	5 . Determine if there is a need for elderly housing options, espeically for those on limited incomes.	2/2011	12/2013		PZC	
B	6 . Consider ways to address providing housing opportunities for younger persons and families.	2/2011	Ongoing	n/a	PZC	
3 <input type="checkbox"/>	7 . Evaluate the Incentive Housing Program as a possible tool for creating additional housing options	2/2011	12/2013		PZC	
3 <input type="checkbox"/>	8 . Consider requiring housing on upper floors of buildings in mixed use node areas	2/2011	12/2013		PZC	

Letter = Ongoing Program / Strategy

- A = Most Important
- B = Important
- C = Needed

Number = Distinct Task / Action

- 1 = Most Important
- 2 = Important
- 3 = Needed

Implementation Tables

C. Encourage Flexible Residential Subdivision Layouts

Residential Development

Priority / Status	Description	Date Added	Target Date	% Complete	Leader	Partners
B	1 . Encourage the use of flexible subdivision layouts.	2/2011	Ongoing	n/a	PZC	
3 <input type="checkbox"/>	2 . Review the current cluster subdivision regulations to ensure they will encourage flexible development and provide the benefits the community seeks.	2/2011	12/2013		PZC	

Letter = Ongoing Program / Strategy

- A = Most Important
- B = Important
- C = Needed

Number = Distinct Task / Action

- 1 = Most Important
- 2 = Important
- 3 = Needed

Implementation Tables

D. Implement Locational Guidelines For Multi-Family Development

Residential Development

Priority / Status	Description	Date Added	Target Date	% Complete	Leader	Partners
B	1 . Guide multi-family housing developments to appropriate locations within the community.	2/2011	Ongoing	n/a	PZC	

Letter = Ongoing Program / Strategy

- A = Most Important
- B = Important
- C = Needed

Number = Distinct Task / Action

- 1 = Most Important
- 2 = Important
- 3 = Needed

Implementation Tables

Guide

Business Development

See pages 58-63 in the "Policy Element" of the Plan of Conservation and Development for information on "Business Development" strategies.

A. Continue to Pursue Economic Development

Business Development

Priority / Status	Description	Date Added	Target Date	% Complete	Leader	Partners			
B	1 . Continue to pursue economic development which is consistent with community goals and objectives.	2/2011	Ongoing	n/a	EDC	PZC	BOS	RTM	BOF
B	2 . Continue to support regional comprehensive economic development strategies and programs.	2/2011	Ongoing	n/a	EDC	PZC	BOS	RTM	BOF

Letter = Ongoing Program / Strategy

- A = Most Important
- B = Important
- C = Needed

Number = Distinct Task / Action

- 1 = Most Important
- 2 = Important
- 3 = Needed

Implementation Tables

B. Promote Appropriate Business Development

Business Development

Priority / Status	Description	Date Added	Target Date	% Complete	Leader	Partners
B	1 . Encourage future business activity in appropriate areas.	2/2011	Ongoing	n/a	PZC	EDC BOS RTM BOF
3 <input type="checkbox"/>	2 . Review the current business zones to be sure that the requirements and locations of business zones are appropriate	2/2011	7/2012		PZC	
3 <input type="checkbox"/>	3 . Consider adjusting the boundaries of some zoning district locations	2/2011	7/2012		PZC	

Letter = Ongoing Program / Strategy

- A = Most Important
- B = Important
- C = Needed

Number = Distinct Task / Action

- 1 = Most Important
- 2 = Important
- 3 = Needed

Implementation Tables

C. Invest In Infrastructure To Encourage Business Development

Business Development

Priority / Status	Description	Date Added	Target Date	% Complete	Leader	Partners
B	1 . Consider making infrastructure investments to promote economic development	2/2011	Ongoing	n/a	EDC	RTM BOF BOS FS

Letter = Ongoing Program / Strategy

- A = Most Important
- B = Important
- C = Needed

Number = Distinct Task / Action

- 1 = Most Important
- 2 = Important
- 3 = Needed

Implementation Tables

D. Address Needs In The Business Triangle Area

Business Development

Priority / Status	Description	Date Added	Target Date	% Complete	Leader	Partners
C	1 . Continue to study the traffic and land use strategies for the Business Triangle / Parkway North area.	2/2011	Ongoing	n/a	PZC	TA
C	2 . Continue to work with the Connecticut Department of Transportation and others to study the traffic and land use strategies for this area.	2/2011	Ongoing	n/a	PZC	TA
C	3 . Consider undertaking a special study of the Business Triangle / Parkway North area.	2/2011	Ongoing	n/a	PZC	

Letter = Ongoing Program / Strategy

A = Most Important
 B = Important
 C = Needed

Number = Distinct Task / Action

1 = Most Important
 2 = Important
 3 = Needed

Implementation Tables

E. Address Needs In The Mago Point Area

Business Development

Priority / Status	Description	Date Added	Target Date	% Complete	Leader	Partners
C	1 . Maintain and enhance the overall character of the Mago Point area.	2/2011	Ongoing	n/a	PZC	
C	2 . Consider undertaking a special study of the Mago Point area.	2/2011	Ongoing	n/a	PZC	

Letter = Ongoing Program / Strategy

A = Most Important
 B = Important
 C = Needed

Number = Distinct Task / Action

1 = Most Important
 2 = Important
 3 = Needed

Implementation Tables

F. Support Appropriate Home-Based Businesses

Business Development

Priority / Status	Description	Date Added	Target Date	% Complete	Leader	Partners
B	1 . Maintain regulations to allow and manage appropriate home-based businesses.	2/2011	Ongoing	n/a	PZC	

Letter = Ongoing Program / Strategy

- A = Most Important
- B = Important
- C = Needed

Number = Distinct Task / Action

- 1 = Most Important
- 2 = Important
- 3 = Needed

Implementation Tables

Community Facilities Support

See pages 66-67 in the "Policy Element" of the Plan of Conservation and Development for information on "Community Facilities" strategies.

A. Monitor And Adapt To Changing Community Facility Needs Community Facilities

Priority / Status	Description	Date Added	Target Date	% Complete	Leader	Partners
C	1 . Seek to adapt community services and facilities to meet the needs of different future age composition.	2/2011	Ongoing	n/a	BOS	RTM BOF BOE
3 <input type="checkbox"/>	2 . Establish a common maintenance function (both buildings and grounds) for both municipal and educational facilities	2/2011	7/2012		BOS	RTM BOF BOE FS
C	3 . Monitor community facility and services in order to anticipate potential future needs and plan for them.	2/2011	Ongoing	n/a	BOS	RTM BOF BOE RPC
C	4 . Continue to monitor and project school enrollments.	2/2011	Ongoing	n/a	BOE	
C	5 . Consider retaining ownership of Southwest School for recreation fields and possible future school site.	2/2011	Ongoing	n/a	BOS	RTM BOF BOE FS
C	6 . Continue to provide adequate public recreation facilities.	2/2011	Ongoing	n/a	RPC	
C	7 . Consider the potential long-term need to consolidate fire departments and how to make this transition in order to ensure adequate fire response	2/2011	Ongoing	n/a	BOS	RTM BOF BOS FS
C	8 . Enhance security at Town Hall and other municipal facilities.	2/2011	Ongoing	n/a	BOS	RTM BOF BOE
C	9 . Consider establishing or joining a regional animal shelter	2/2011	Ongoing	n/a	BOS	RTM BOF PD

Letter = Ongoing Program / Strategy

- A = Most Important
- B = Important
- C = Needed

Number = Distinct Task / Action

- 1 = Most Important
- 2 = Important
- 3 = Needed

Implementation Tables

Transportation Support

See pages 68-73 in the "Policy Element" of the Plan of Conservation and Development for information on "Transportation" strategies.

A. Maintain The Roadway System We Have Transportation

Priority / Status	Description	Date Added	Target Date	% Complete	Leader	Partners
B	1 . Maintain the roadway system that is in place today in terms of physical condition, drainage, and safety improvements	2/2011	Ongoing	n/a	PW	BOS BOF RTM
B	2 . To the extent possible, maintain the capacity and service levels of the roadway system that is in place today	2/2011	Ongoing	n/a	PW	BOS BOF RTM
B	3 . Provide adequate funding for the road / bridge maintenance program.	2/2011	Ongoing	n/a	BOS	RTM BOF PW
C	4 . Evaluate and address the susceptibility of key roads to be affected by flooding	2/2011	Ongoing	n/a	PW	

Letter = Ongoing Program / Strategy

- A = Most Important
- B = Important
- C = Needed

Number = Distinct Task / Action

- 1 = Most Important
- 2 = Important
- 3 = Needed

Implementation Tables

C. Study Overall Road Connectivity Needs

Transportation

Priority / Status	Description	Date Added	Target Date	% Complete	Leader	Partners
B	1 . Consider whether some sort of circumferential road circulation pattern might help overall traffic circulation	2/2011	Ongoing	n/a	PZC	
C	2 . Consider the desirability of promoting road connections in specific areas.	2/2011	Ongoing	n/a	PZC	

Letter = Ongoing Program / Strategy

- A = Most Important
- B = Important
- C = Needed

Number = Distinct Task / Action

- 1 = Most Important
- 2 = Important
- 3 = Needed

Implementation Tables

B. Balance Circulation Needs With Possible Impacts

Transportation

Priority / Status	Description	Date Added	Target Date	% Complete	Leader	Partners
C	1 . Balance transportation strategies with community character and natural resource strategies	2/2011	Ongoing	n/a	CC	PW
3 <input type="checkbox"/>	2 . Consider reducing required pavement widths for new road construction.	2/2011	7/2012		PZC	
3 <input type="checkbox"/>	3 . Consider reducing parking requirements as part of new developments, especially in mixed use developments or where on-street parking is to be provided	2/2011	7/2012		PZC	

Letter = Ongoing Program / Strategy

- A = Most Important
- B = Important
- C = Needed

Number = Distinct Task / Action

- 1 = Most Important
- 2 = Important
- 3 = Needed

Implementation Tables

D. Promote Pedestrian And Bicycle Circulation

Transportation

Priority / Status	Description	Date Added	Target Date	% Complete	Leader	Partners
B	1 . Give greater emphasis to pedestrian and bicycle circulation	2/2011	Ongoing	n/a	RPC	PZC BOS RTM
B	2 . Expand and improve the network of sidewalks, trails, and walkways.	2/2011	Ongoing	n/a	RPC	PZC BOS RTM
3 <input type="checkbox"/>	3 . Update the sidewalk plan	2/2011	7/2012		RPC	PW
3 <input type="checkbox"/>	4 . Prepare a trails plan	2/2011	7/2013		CC	
B	5 . Encourage and provide bikeways in town.	2/2011	Ongoing	n/a	RPC	PZC
3 <input type="checkbox"/>	6 . Prepare a bicycle master plan	2/2011	7/2013		RPC	PW

Letter = Ongoing Program / Strategy

- A = Most Important
- B = Important
- C = Needed

Number = Distinct Task / Action

- 1 = Most Important
- 2 = Important
- 3 = Needed

Implementation Tables

E. Support Provision Of Other Transportation Services

Transportation

Priority / Status	Description	Date Added	Target Date	% Complete	Leader	Partners
C	1 . Maintain and expand transit services to the extent feasible.	2/2011	Ongoing	n/a	BOS	RTM BOF
C	2 . Promote carpooling, vanpooling and commuter parking facilities.	2/2011	Ongoing	n/a	BOS	RTM BOF
C	3 . Provide for dial-a-ride and other on-demand transit services within the community.	2/2011	Ongoing	n/a	BOS	RTM BOF
C	4 . Support other transportation services if they become available.	2/2011	Ongoing	n/a	BOS	RTM BOF

Letter = Ongoing Program / Strategy

A = Most Important
 B = Important
 C = Needed

Number = Distinct Task / Action

1 = Most Important
 2 = Important
 3 = Needed

Implementation Tables

Utility Infrastructure Support

See pages 74-79 in the "Policy Element" of the Plan of Conservation and Development for information on "Utility Infrastructure" strategies.

A. Use Infrastructure To Guide Desired Community Growth Patterns Utility Infrastructure

Priority / Status	Description	Date Added	Target Date	% Complete	Leader	Partners
A	1 . Continue to provide infrastructure in ways that supports, but does not dictate, the land use plan.	2/2011	Ongoing	n/a	BOS	UC PZC

Letter = Ongoing Program / Strategy

- A = Most Important
- B = Important
- C = Needed

Number = Distinct Task / Action

- 1 = Most Important
- 2 = Important
- 3 = Needed

Implementation Tables

B. Maintain Adequate Water Supply And Infrastructure

Utility Infrastructure

Priority / Status	Description	Date Added	Target Date	% Complete	Leader	Partners
C	1 . Continue to seek ways to augment water supply sources	2/2011	Ongoing	n/a	UC	PZC
B	2 . Continue to participate in regional water development projects.	2/2011	Ongoing	n/a	UC	BOS RTM
B	3 . Continue to maintain the water supply system	2/2011	Ongoing	n/a	UC	BOS RTM
C	4 . Encourage water conservation	2/2011	Ongoing	n/a	CC	UC

Letter = Ongoing Program / Strategy

- A = Most Important
- B = Important
- C = Needed

Number = Distinct Task / Action

- 1 = Most Important
- 2 = Important
- 3 = Needed

Implementation Tables

C. Maintain Adequate Sewer Capacity And Infrastructure

Utility Infrastructure

Priority / Status	Description	Date Added	Target Date	% Complete	Leader	Partners
B	1 . Continue to maintain the sewage collection and treatment system	2/2011	Ongoing	n/a	UC	
B	2 . Continue to address issues of inflow and infiltration	2/2011	Ongoing	n/a	UC	
B	3 . Implement an overall maintenance plan for the refurbishment of pump stations and other improvements.	2/2011	Ongoing	n/a	UC	

Letter = Ongoing Program / Strategy

- A = Most Important
- B = Important
- C = Needed

Number = Distinct Task / Action

- 1 = Most Important
- 2 = Important
- 3 = Needed

Implementation Tables

D. Enhance Overall Drainage Systems

Utility Infrastructure

Priority / Status	Description	Date Added	Target Date	% Complete	Leader	Partners
3 <input type="checkbox"/>	1 . Codify low impact development standards into local land use regulations	2/2011	Ongoing	n/a	PZC	
3 <input type="checkbox"/>	2 . Evaluate existing drainage structures and approaches to help prevent flooding which threatens life or property.	2/2011	Ongoing	n/a	PW	

Letter = Ongoing Program / Strategy

- A = Most Important
- B = Important
- C = Needed

Number = Distinct Task / Action

- 1 = Most Important
- 2 = Important
- 3 = Needed

Implementation Tables

E. Continue to Manage Wired Utilities

Utility Infrastructure

Priority / Status	Description	Date Added	Target Date	% Complete	Leader	Partners
C	1 . Strive to ensure that wired utility services are adequate to meet the needs of Waterford residents and businesses	2/2011	Ongoing	n/a	UC	
C	2 . Retain the requirement for wired utilities to be placed underground.	2/2011	Ongoing	n/a	PZC	
C	3 . Support efforts to improve the reliability of wired utilities.	2/2011	Ongoing	n/a	UC	

Letter = Ongoing Program / Strategy

- A = Most Important
- B = Important
- C = Needed

Number = Distinct Task / Action

- 1 = Most Important
- 2 = Important
- 3 = Needed

Implementation Tables

F. Enhance Wireless Communications Coverage

Utility Infrastructure

Priority / Status	Description	Date Added	Target Date	% Complete	Leader	Partners
C	1 . Maintain and refine the telecommunications policy preferences	2/2011	Ongoing	n/a	PZC	
C	2 . Strive to balance telecommunications capacity with maintaining the overall character and ambience of Waterford	2/2011	Ongoing	n/a	PZC	
C	3 . Work with telecommunication providers to provide more service capacity while maintaining the overall character and ambience of Waterford.	2/2011	Ongoing	n/a	PZC	
C	4 . Encourage “stealth” tower applications which meet communication needs while minimizing impacts on the character and ambience.	2/2011	Ongoing	n/a	PZC	

Letter = Ongoing Program / Strategy

A = Most Important
 B = Important
 C = Needed

Number = Distinct Task / Action

1 = Most Important
 2 = Important
 3 = Needed

